

TAYLOR BOWLS 2017-18 CATALOGUE

AVAILABLE ONLINE
AND FROM
OVER 500
LOCAL STOCKISTS



www.taylorbowls.com

Welcome

As a family owned business we take great pride developing and selecting the best products and ideas - incorporating style and comfort leaving you to concentrate on your game. From the heart of our factory to your bowling green we make sure we get it right!

Taylor Bowls are the most accurately made and advanced bowls in the world! Through recently invested production equipment and advancing technology we have created extremely accurately designed running surfaces that are unique to our brand and no other manufacturer can match. These offer consistent exacting lines when playing a draw shot or a controlled weighted shot.

We guarantee our bowls are matched sets and take the same bias every time having been tested by the world's most experienced testers. All our players use sets off the shelf and no adjustments are made, these facts are backed up by our 15 year bowls guarantee, a feat that we are extremely proud of!

With over 220 years of experience - don't take a gamble - Trust Taylors!

"I have used Taylor Bowls for over 20 years and can confidently recommend them, whether you're a beginner or a more accomplished player you can't go wrong!"

Andy Thomson (MBE)



"I enjoy playing with Taylor Bowls they have a model to suit every occasion, reliably consistent and never let me down!"

David Gourlay (Scottish National Coach)

"Some of my biggest shots have come from my Taylor Ace, an absolutely fantastic bowl that I can depend on!"

Darren Burnett (Current Commonwealth Gold Medal Winner)



Some Customer Feedback

"Great Site, Great Bowls Supplier and Great Products!"

Barry, Cambridge

"Big Company with a Big Heart - Supporting Bowls at every level!"

Richard, Lincolnshire

"In these days when very few things are made in Scotland it warms the heart to know that we still have a world renowned company with a world class customer service still manufacturing bowls!"

Alfie, Lannetta

"Hi - Just wanted to say a massive thank you for the super fast delivery of my daughter's custom Aces. I only ordered them on Saturday and they were delivered 3 days later. They were a birthday present so this superb customer service has just helped top off my daughters 13th birthday. Please extend my thanks to all involved.

Kirsty, Derbyshire

Contents

<i>Shop on-line and Build a Bowl™</i>	4
<i>Flat Green Bowls</i>	5
<i>Emblems Range</i>	14
<i>New Half Pipe Grip</i>	15
<i>Colour Bowls Range</i>	16 - 17
<i>Junior Ace Colours</i>	18
<i>Crown Green Junior Bowls</i>	19
<i>Crown Green Bowls and Jacks</i>	20
<i>Carpet Short Mat Bowls</i>	22
<i>Factory Tours</i>	24
<i>Clothing</i>	25
<i>Waterproof Clothing</i>	32
<i>Shoes</i>	34
<i>Bag Range</i>	36
<i>Bowling Green Sundries</i>	40
<i>For your Club</i>	43



Andy Thomson



Jonathan Ross



Darren Burnett



Stewart Anderson



David Gourlay



Lesley Doig



Marion Purcell



Laura Daniels



Chloe Watson



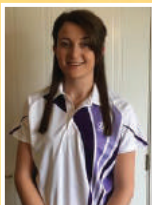
Chloe Greechan



Neil Mulholland



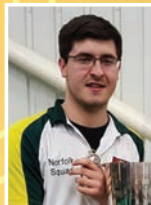
Stacy McDougall



Paige Dennis



Chris Brown



Jack Pye



Mark Beattie



Emily Thomas



Bradley Coles

SHOP ONLINE @ TAYLORBOWLS.COM



THE ORIGINAL AND STILL THE BEST
BUILD A BOWL™

www.taylorbowls.com



Along with 500 official retail stockists of Taylor Bowls products in the UK, you can now go online and purchase direct from our warehouse and have your items delivered direct to your door.

Over 2000 products are available online with next day delivery as standard, free delivery is also available on orders over £50.00

Choose from over 1 million combinations of bowl choices using our revolutionary and still the best **Build a Bowl™** no matter what you choose there are no hidden fees or charges !



**15 YEAR
GUARANTEE
ON ALL OUR
BOWLS**

LAZER



A slim profile bowl. Precision narrow bias.
Designed for indoor and fast outdoor conditions.
Progrip as standard. Available in Black only.

VECTOR-VS



Narrow drawing arc with no hook at the finish.
Recommended primarily for all indoor surfaces and artificial surfaces.
Progrip as standard.

BLAZE



The draw is between the Vector VS and the Ace with a nice sweep at the end. Can be used for both indoor and outdoor surfaces.
Premier Grip as standard.

ACE



Slightly wider drawing arc than the Vector VS with no hook at the finish. Recommended for all indoor and outdoor surfaces.
Progrip as standard .

INTERNATIONAL



Similar to the Ace but with a stronger finish.
Recommended for all indoor and outdoor surfaces.
Progrip as standard.

LEGACY SL

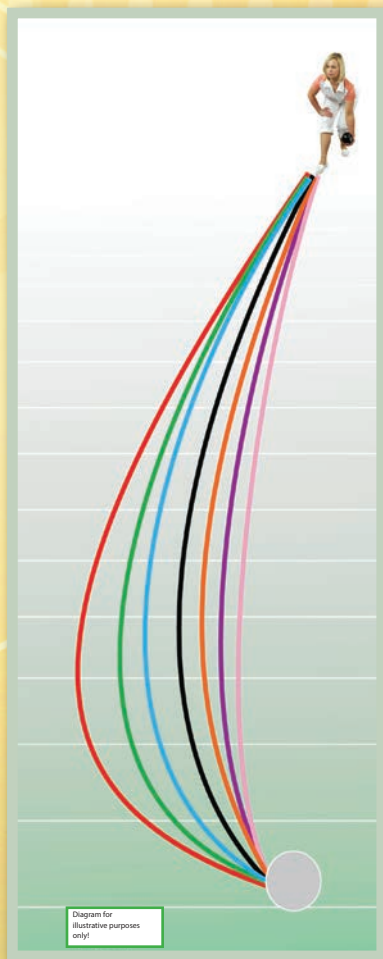


A neat slim profile bowl, for easier grip and control.
Medium to wide bias with a controlled draw to the jack.
Progrip as standard. Available in Black only.

LIGNOID



Predominantly an outdoor, grass surface or Short Mat bowl with a wide draw. The Lignoid retains a high quality finish at an extremely competitive price.
Progrip as standard. Colour to order.



GRIP GUIDE



PROGRIP - One of our most recognised deep dimple circular grips giving you excellent control in all weather conditions.

NEW



HALF PIPE GRIP - The dimples are inset into a deep hollow giving you the feeling of a smaller bowl allowing you to feel more confident with a size of bowl you didn't think possible. (See p15 for details)



PREMIER GRIP - A deep oblong shaped grip ensures a confident grasp allowing you to deliver your shot accurately.



CRESCENT GRIP - A half moon surface grip which is not as deep as the ProGrip or Premier Grip.



PLAIN - Plain bowls, without grips, are available to order on Ace, International, Vector VS and Blaze models.

NB If we don't have the option you are looking for please contact us and we will endeavour to accomodate your request.

SIZE	00	0	1	2	3	4	5	6
DIAMETER								
mm	116	118	121	122.5	124	125.5	127	128.5
inches	4 ⁷ / ₁₆	4 ⁵ / ₈	4 ³ / ₄	4 ¹³ / ₁₆	4 ⁷ / ₈	4 ¹⁵ / ₁₆	5	5 ¹ / ₁₆
LIGNOID								
MEDIUM WEIGHT								
gms		1230	1325	1380	1430	1480	1535	
lbs-ozs		2-11 ³ / ₈	2-14 ³ / ₄	3-0 ⁵ / ₈	3-2 ⁷ / ₈	3-4 ¹ / ₄	3-6 ⁵ / ₈	
HEAVY WEIGHT								
gms	1210	1250	1360	1420	1475	1530	1585	
lbs-ozs	2-10 ³ / ₄	2-12	3-0	3-02	3-04	3-06	3-08	
ACE, VECTOR VS & INTERNATIONAL								
HEAVY WEIGHT								
gms	1220	1250	1355	1420	1475	1530	1585	
lbs-ozs	2-11	2-12	2-15 ³ / ₄	3-02	3-04	3-06	3-08	
BLAZE, LAZER & LEGACY SL								
HEAVY WEIGHT								
gms	1180	1235	1340	1410	1445	1490	1530	
lbs-ozs	2-9 ³ / ₄	2-11 ¹ / ₂	2-15 ¹ / ₄	3-1 ³ / ₄	3-03	3-4 ¹ / ₈	3-06	

"Did you know there are only 2ozs of a difference between the sizes of Taylor bowls? This small difference ensures you get a precise fit for all different hand sizes. There is no need for half sizes in the Taylor range. In fact many bowlers find, if they need to come down in size, it is often 2 sizes due to such a small difference between them".

Coloured bowls available in heavy weight only.

As a tolerance is allowed during production, this table is for guidance only.

Please note that Taylor Bowls reserves the right to alter the specifications of products at any time.

Designed with a slender diameter for a more comfortable fit in your hand. The deep oblong shaped dimple Premier grip ensures a confident grasp allowing you to deliver every shot accurately. The draw is between the Vector VS and the Ace with a nice sweep at the end. Can be used for both indoor and outdoor surfaces.

Choose from our colour range (P16 - 17). Premier Grip as standard. All other grips available to order (see page 6 for more information).

**15 YEAR
GUARANTEE
ON ALL OUR
BOWLS**



BLAZE

Heavy	00-5	Black
Heavy	00-5	Colours

121 Blaze



"Playing with Taylor bowls has played a big part in my continuing success. The line is always consistent and predictable".

Darren Burnett

BIAS GUIDE



BLAZE



A slightly wider drawing arc than the Vector VS with no hook at the finish making it a forgiving model. It's a dual purpose bowl, ideal for any rink position, indoors and out.

Choose from our colour range (P16 - 17). Progrid as standard. All other grips available to order (see page 6 for more information).



ACE

Heavy	00-5	Black
Heavy	00-5	Colours

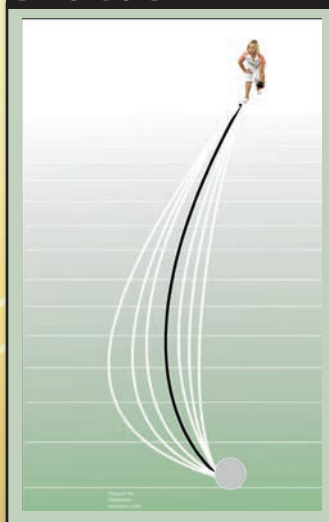
131 Ace



"I use the Ace- it's a good all round model, suitable for any position from lead through to skip and reliable in any situation both indoor and out."

Andy Thomson

BIAS GUIDE



**15 YEAR
GUARANTEE
ON ALL OUR
BOWLS**

ACE



The Vector VS is perfect for fast surfaces and indoor greens, having a lenient, gentle draw to the jack with no hook at the end, making it ideal for front end bowlers.

Choose from our colour range (P16 - 17). Progrid as standard. All other grips available to order (see page 6 for more information).



VECTOR VS

Heavy	00-5	Black
Heavy	00-5	Colours

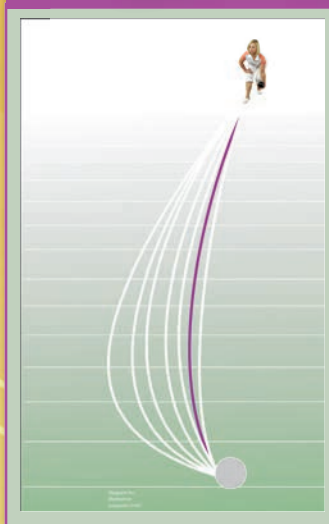
151 Vector VS



"I like my Vector VS they have a steady and consistent line which I like and continue to bring me success".

Carrie McLean

BIAS GUIDE



**15 YEAR
GUARANTEE
ON ALL OUR
BOWLS**

VECTOR-VS



The Taylor International has been updated with a contemporary new look along with the trusted progrid as standard, whilst still retaining its original bias. Recommended by David Gourlay, Neil Mulholland and Lesley Doig. This model has a slightly bigger draw than the Ace and is ideal for outdoor greens and medium paced indoor surfaces.

Choose from our colour range (P16 - 17). Progrid as standard. All other grips available to order (see page 6 for more information).

**15 YEAR
GUARANTEE
ON ALL OUR
BOWLS**



INTERNATIONAL

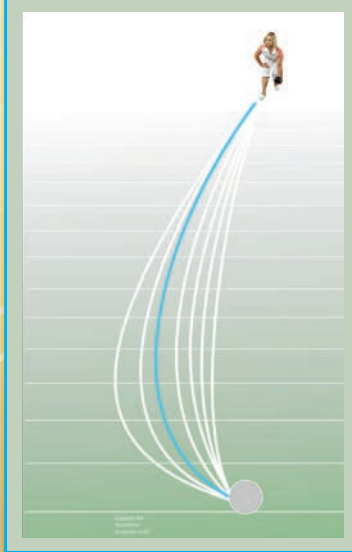
Heavy 00-5	Colour
Heavy 00-5	Black

141 International



"The new International bowl looks and feels great! Now with the new progrid it feels comfortable in the hand and gives me complete control in all conditions."
Neil Mulholland

BIAS GUIDE



INTERNATIONAL

Predominantly for outdoor grass surfaces or short mat play. This bowl has a wider draw. Featuring 'Progrip' as standard, the Lignoid retains a high quality finish at an extremely competitive price.

Available in Black - Colour to order.



LIGNOID

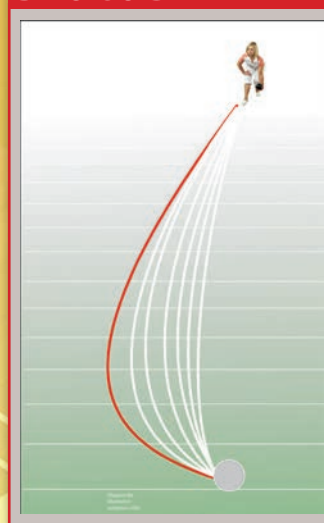
Heavy 00 - 5 Colour (Available to order)
Medium 0-5, Heavy 00-5, Black

137 Lignoid

**15 YEAR
GUARANTEE
ON ALL OUR
BOWLS**



BIAS GUIDE



LIGNOID

A slim profile bowl with a precision narrow bias. Designed for indoor and fast outdoor conditions.
Features 'Progrip' as standard.
Available in Black only.



LAZER

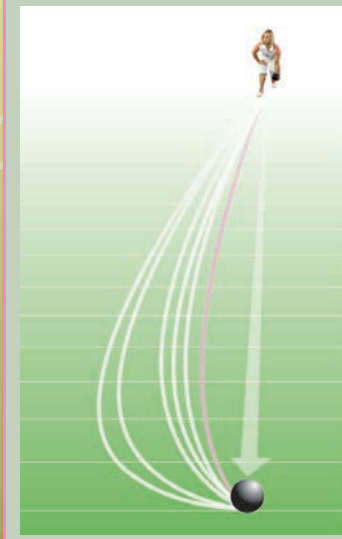
Heavy 00-5 Black

161 Lazer

**15 YEAR
GUARANTEE
ON ALL OUR
BOWLS**



BIAS GUIDE



LAZER

This narrower profile bowl is designed to fit comfortably in your hand, with its medium bias and a controlled swing to the jack.

'Progrip' as standard. Available in Black only.



LEGACY SL

Heavy 00-5

Black

135 **Legacy SL**



BIAS GUIDE



LEGACY SL

A selection of some of our emblems are shown here. There are over 1000 emblems available on our website to create the bowl of your choice using our revolutionary Build a Bowl™ at www.taylorbowls.com



BEE



BOWLER 9



DESIGN 10



CREST 98



CROWN 2



DESIGN 4



BULLDOG 1



GEOMETRICAL 1



CROC 10



LIGHTNING BOLT



BLINA 3



BUTTERFLY 1



WARHAWK



FEATHERS ROYAL



LOGO 814

BE A DARE-DEVIL

WITH THE NEW HALF PIPE GRIP FROM TAYLOR BOWLS

Be adventurous with your next set of Taylor Bowls!

Why not try our Half Pipe Grip?

The dimples are inset into a deep hollow giving the feeling of a smaller bowl allowing you to feel more confident with a size of bowl you didn't think possible.

WHAT IS A HALF PIPE ?
THE NAME COMES FROM A TERM USED IN
SKATEBOARDING AND SNOWBOARDING TO
DESCRIBE THE NEW INNOVATION IN OUR GRIP

"If you prefer a grip on your bowls, why not try the new Half Pipe Grip. It gives an enhanced feeling of control giving you confidence to try a bigger bowl you didn't think possible! Very comfortable in the hand producing a consistent, accurate delivery."

Andy Thomson - MBE



Please note: This grip is available to order on Ace, Blaze, Vector VS and International.

Design Application No 003380815-0001

COLOUR

The "Classic Colour Range" has five traditional colours for the challenges your game has ahead. These new colours bring the total to ten. We're sure you'll find a colour suited to you! Please check our website for colour updates.



DBLUE/BLUE



BLUE/MINT



BLACK



DBLUE/MAGENTA



MAROON/RED

The "Dynamic" Colour Range pioneered by Taylor Bowls plays an integral part in encouraging new players into the game bringing exciting visual elements to the sport. Ace, Blaze, International and Vector-VS are available in all 10 colours.



PINK/WHITE



BLUE/ORANGE



PURPLE/WHITE



BLUE/WHITE



MINT/WHITE

RANGE

JUNIOR ACE

The 'Junior Ace' bowl demonstrates Taylor's continuing commitment to youth development within the sport. At 3^{7/8"} the bowl fits comfortably into a young person's hand and is ideal for introducing children to the sport at an early age.

NB. Junior bowls do not carry the WBB official stamp.

JUNIOR ACE

50131BW	Junior Ace	Blueberry Ice
50131BLK	Junior Ace	Black
50131BBY	Junior Ace	Blue/Blue/Yellow
50131DBB	Junior Ace	DBLue/Blue
50131MR	Junior Ace	Maroon/Red
50131MW	Junior Ace	Magenta/White

Please check our website for Colour updates



BLACK



BLUEBERRY ICE



BLUE/BLUE/YELLOW



MAROON/RED



DBLUE/BLUE



MAGENTA/WHITE



The new B.C.G.B.A. ruling ensures that Taylor Junior Crown bowls are legal to play with. These bowls have a minimum weight of 907gm and a minimum profile height of 100mm.

Rule 1.5 of the B.C.G.B.A.

"Where age is a consideration a player may use a bowl under the 907gm limit as long as that bowl is a minimum profile height of 100mm and is not black or yellow in colour."



JUNIOR CROWN

220BM	Junior Crown	Blue/Mint
220DBB	Junior Crown	DBLue/Blue
220MR	Junior Crown	Maroon/Red
220MW	Junior Crown	Magenta/White



BLUE/MINT



DBLUE/BLUE



MAROON/RED



MAGENTA/WHITE

ELITE

The Elite model now comes with attractive colourful mounts. This model performs to the usual exacting Taylor standard.

Weight: 2.0, 2.2, 2.4, 2.6, 2.8, 2.10

200	Black	Standard Density
210	Black	High Density

EXPRESS

This minimum density bowl emulates the running properties of wooden bowls. The Express is now available to order via any Taylor retailer.

Weight: 2.4, 2.6, 2.7, 2.8, 2.9, 2.10, 2.11

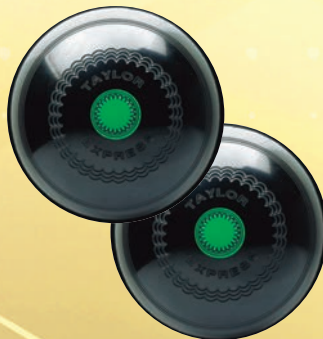
Bias:	Officially approved 2 full bias	
219	Black	Low Density

GRIPPA

Developed in close consultation with crown green expert Roy Armson, the Grippa is Taylor's most successful crown green bowl. It is mounted and has an attractive crescent grip.

Weight: 2.4, 2.6, 2.8, 2.10

205	Black	Standard Density
207	Black	High Density



Mount Colours are available on request please phone 0141 554 5255



TWO BOWL SPORTS BAG

338BL	2 Bowl Double Decker	Blue
338R	2 Bowl Double Decker	Red
Height 13", Width 10" Depth 6.½"		

DELUXE

Subtle, attractive cosmetics - coupled with a deeper and wider grip - gives this classic Crown Green bowl a lift.

Available in a choice of standard and high density to suit all conditions.

Weight: 2.4, 2.6, 2.8, 2.10, 2.11

201	Black	Standard Density
203	Black	High Density



ELITE PRACTICE JACKS



Quality practice jack.

257E	Black
258E	Yellow

STANDARD JACKS



Designed to meet
2004 BCGBA regulations.

Taylor Bowls are appointed as Standard Jack Makers and Bias Testers to the British Crown Green Bowling Association and given the code letter "A". Jacks must be re-tested and stamped every 7 years.

257	Black
258	Yellow

TWO BOWL CYLINDER

337BL	Two Bowl Cylinder	Blue
337R	Two Bowl Cylinder	Red
Height 5½", Width 10", Depth 5½"		



Carpet Bowling in its many forms is rapidly increasing in popularity. In order to satisfy these demands Taylor Bowls manufactures products specifically for the following activities.

SHORT MAT BOWLING

Depending on the position you play and the speed of your carpet our bowls models are ideal for short mat bowling. The Lignoid suits slow carpets whereas Ace, Blaze, International and Vector Vs are better for fast carpets. For more details of our full range see p5 - p13.

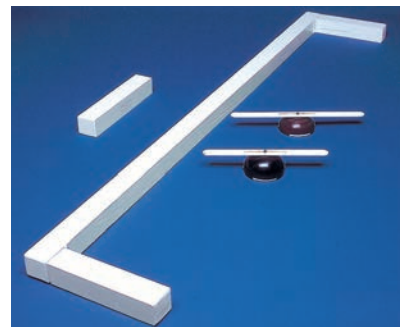
137E	Set of 4, Lignoid Bowls	Medium or Heavy, Black - Colour to order
137E2	Per Pair, Lignoid Bowls	Medium or Heavy, Black

Note: Pairs of Lignoid Bowls are sold with a Valid Test Stamp but cannot be Re-tested under WB regulations unless in sets of four.



ACCESSORIES

6000	White marking tape 25m x 12mm roll.
6002	White fenders, pair - size 6' x 12" made of 3"sq timber. Folds flat for easy carriage and storage.



6003	Short mat centre block. Regulation size 15" x 3" x 3".
6004	Biased carpet bowl "spinner" block, 18" x 21/4" height.
6005	Short mat spinner block 15" x 3" height.



MARK BEATTIE



JACK PYE



EMILY THOMAS



SCOTTISH CARPET/ SHORT MAT BOWLING

As the names suggest, both games originated in Scotland and are played as follows:
Scottish Carpet Bowling played on low felt covered table 3' wide and 24' long using -

- 512 Set of (3 ¾") non-biased, unmounted Carpet Bowls, consisting of 8 Black and 8 Brown Bowls.
(3 ¾") non-biased Carpet Bowls, either Black or Brown with mounts as required.

Scottish Short Mat Bowling played on a carpet 12' wide (minimum 9') using No. 5 bias bowls, manufactured to special order from our Lignoid Range.



BIASED CARPET BOWLING

Requires a carpet 6' wide and only 30' long, using 3 7/8" diameter bowls. Biased Carpet Bowls. Each set consists of 4 pairs of Black and 4 pairs of Brown bowls with a White jack. Each pair of bowls is distinguished by coloured scores of Red, Blue, Green and White. The bowls, despite their smaller size, have been machined and finished to give as accurate a bias as the finest lawn bowls.

501	4 Pair Brown, 4 Pair Black
501C16	4 Pair Black, 4 Pair Yellow

SHORT MAT CARPETS

Synthetic needle-felt top surface with cellular foam backing giving a medium/fast paced mat.

6310	Verdemat	30' x 6'
6315	Verdemat	45' x 6'

Synthetic fibre top surface and chip foam backing. A relatively hard top surface with a fast speed preferred by some experienced bowlers.

63010	Wyggreen	30' x 6'
63015	Wyggreen	45' x 6'

45' x 6' Carpets are supplied pre-marked for the short mat game.



ROLL UP CARPETS

For Scottish Carpet Bowls

6308	Wyggreen	24' x 3'
------	----------	----------



VISITOR CENTRE

Drop into our recently revamped and welcoming visitor centre. Learn about our history and fascinating facts about the bowling world!
Open Mon - Fri 9.00am - 4.30pm

FACTORY TOUR

Book an informative factory tour to find out how bowls are made from start to finish!

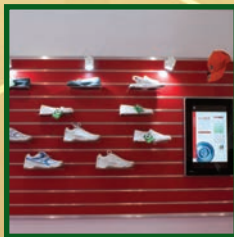
Call 0141 554 5255 or email us at info@taylorbowls.com



INDOOR RINK

You can try all our bowls on our laser levelled indoor rink. Expert advice is on hand to make sure you get the bowl suited to you.

SHOWROOM





Taylor Bowls is leading the way yet again, with further high specification additions to our very popular range of ladies and gents clothing.

Clothing Rules

Bowls England, Scotland, Ireland and Wales rules state that clothing, shoes and waterproofs can have colour but should be predominately white.



Approximate sizes for all ladies clothing

S	8/10	32 – 34
M	12/14	34 – 36
L	14/16	38 – 40
XL	16/18	42 – 44
XXL	18/20	46 – 48

Approximate sizes for all gents clothing

S	34-36
M	37-39
L	40-42
XL	43-45
XXL	46-48

ACE SPORT XV1 SHIRTS

Our ever popular Ace range has been updated this year with a refreshing new look! Available in both men's and women's sizes in 4 different Colourways, manufactured with an exceptional quality, easy care sports fabric - We know you'll look your best!



ACE SPORT XVI SHIRT

Sizes: S / M / L / XL / XXL

680 **Ladies** Ace XVI Sports Shirt Silver Trim

681 **Ladies** Ace XVI Sports Shirt Blue Trim

682 **Ladies** Ace XVI Sports Shirt Black/Red Trim

686 **Ladies** Ace XVI Sports Shirt White Trim **NEW**

670 **Gents** Ace XVI Sports Shirt Silver Trim

671 **Gents** Ace XVI Sports Shirt Blue Trim

672 **Gents** Ace XVI Sports Shirt Black/Red Trim

676 **Gents** Ace XVI Sports Shirt White Trim **NEW**



SPORTS TROUSERS

This garment is a jersey style knitted material with a comfortable soft cotton woven into the reverse side, giving extraordinary comfort. Featuring: fully elasticated waist band, two front facing side pockets, zipped front fastening and stitching detail on the front crease line to minimise ironing.

LADIES SPORTS TROUSERS

Sizes: 10 to 24
Lengths 27" / 29" / 31"

757	Ladies Sport Trousers - Grey
753	Ladies Sport Trousers - White
754	Ladies Sport Trousers - Black NEW



GENTS SPORTS TROUSERS

Sizes: Length 29" 32-46 waist
Length 31" & 33" 32-46 waist

743	Gents Sports Trousers	Grey
742	Gents Sports Trousers	White
745	Gents Sports Trousers	Black NEW



"These modern sporting bowls trousers look really smart with my official Bowls England uniform and are so comfortable."

Tony Allcock

TRADITIONAL V-NECK

GENTS KNITTED V NECK

Quality knitwear to complement other garments in our range. Knitwear depicts a 'dropped stitch' effect design stopping half way up the garments.

Taylor logo on left sleeve in white.

Sizes: S / M / L / XL / XXL

775 Gents V Neck



BUTE SHIRT

BUTE SHIRT

This style has specially designed piped mesh inserts on sleeves and side panels. Taylor logo is embroidered in a soft grey colour.

Sizes: S / M / L / XL / XXL

732 Bute Shirt



TIREE TOP



TIREE TOP

This garment has a more defined shape. Piping outlines the neck shape, with mesh side panels to give it the ultimate sporty look and is complimented by soft grey, soft pink or soft turquoise embroidery.

Sizes: S / M / L / XL / XXL

730 Tiree Top (Pink piping)

720 Tiree Top (White piping)

733 Tiree Top (Turquoise piping)

IONA TOP

IONA TOP

The Iona is our best selling top with an open v-neck style with collar, featuring a left handside pocket. Small side vents.

Sizes: S / M / L / XL / XXL

725 Iona Top



MELROSE TOP

MELROSE TOP

A similar neckline to the popular Iona top with the addition of soft grey piping which enhances the shoulder and collar line of the garment with embroidery in a matching silver tone. The back area of the garment is slightly shaped to give an attractive appeal to all age groups.

Sizes: S / M / L / XL / XXL

731 Melrose Top



BRORA TOP

BRORA TOP

This style is a full fronted zip top incorporating two front facing zipped pockets. Full frontal zip to base of collar. Twin front pockets. Side vents.

Sizes: S / M / L / XL / XXL

728 Brora Top



ACE SPORT XV1 JACKETS

Lightweight Windblocker. Available in both men's and women's sizes in 3 different colour-ways. Manufactured with an exceptional quality and easy care sports fabric. We know you'll look your best!



ACE SPORT XVI JACKET

Sizes: S / M / L / XL / XXL

683 **Ladies** Ace XVI Sports Jacket Silver Trim

684 **Ladies** Ace XVI Sports Jacket Blue Trim

685 **Ladies** Ace XVI Sports Jacket Black/Red Trim

673 **Gents** Ace XVI Sports Jacket Silver Trim

674 **Gents** Ace XVI Sports Jacket Blue Trim

675 **Gents** Ace XVI Sports Jacket Black/Red Trim



SOFT SHELL SPORT JACKET

Exceptional quality, easy care sports fabric made from a durable water repellent stretchy material making the jacket showerproof with a membrane and bonded fleece lining for breathability, comfort, warmth and wind protection.

Separate designs for men and women with 2 front zipped pockets, cuffs, collar and side panels in colour to keep your garment looking clean, as these areas are traditionally the worst for soiling. Machine washable!

NEW



SOFT SHELL SPORT JACKET

Sizes: S / M / L / XL / XXL

688 Gents Soft Shell Sport Jacket White/Dark Blue

687 Ladies Soft Shell Sport Jacket White/Blue



Contrasting Taylor Logos embroidered onto back neck of respective garments.

NEW



FLEXI-DRI WATERPROOFS

The Flexi-Dri waterproofs are now available in both grey and blue which are smart, sporty, practical and comfortable.

These waterproofs are engineered from a technologically advanced, breathable, lightweight, wind-proof & waterproof material with a clever elastane influence for greater mobility particularly around the arm and leg areas. With taped seams and stretch mesh lining the waterproofs offer a comfortable, flexible fit for a smooth, non restrictive delivery.

The blue or mid grey coloured panelling is on the inside of the collar, the side panels and underarm area – traditionally the worst areas for the garments soiling. Piping in the same tone enhances the jacket's pockets.

Features

- Fully Waterproof
- Hood which rolls into the collar
- Drawstring around the bottom
- Internal pocket near zip
- Velcro fastenings on the sleeves



FLEXI-DRI WATERPROOF

Sizes:	XS/S/M/L/XL/XXL
701BL	Waterproof Jacket Blue
701	Waterproof Jacket Grey



UNISEX RAIN HAT



Sizes: S/M/L

770 Unisex Rain Hat - **NEW FIT**



To take care of your waterproofs we recommend the use of Nikwax Products.

FLEXI-DRI OVERTROUSERS

Leg lengths 27" 29" 31" 33"

Medium 32" to 38"

Large 36" to 44"

X-Large - up to 48"

702 Waterproof Trousers



NIKWAX

Washing Instructions for your Flexi-Dri Waterproofs

If you plan to wash your Flexi-Dri waterproofs, ensure you wash them in non-detergent soap.

We highly recommend using NikWax Tech Wash.

After washing use NikWax TX-Direct Spray-On to restore durable water-repellency.



496 NIKWAX Tech Wash

497 NIKWAX TX - Direct Spray On

LADIES SHEZ

Sizes: 3-8 (inc half sizes)

400 Shez Sandal White



LADIES VICKI

Sizes: 3-8 (inc half sizes)

405 VICKI Ladies Slip-on Shoe White

4005 VICKI Ladies Slip-on Shoe Grey



LADIES CAMILLE

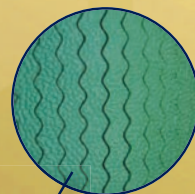
Sizes: 3-8 (inc half sizes)

403 CAMILLE Ladies Lace-up Shoe White

404 CAMILLE Ladies Lace-up Shoe Grey



The unique water repellent sole is standard on all shoes in the Greenz range.



GENTS BIAS

6-12 (inc half sizes except 11½)

401	BIAS Gents Lace-up Shoe White
402	BIAS Gents Lace-up Shoe Grey



GENTS MODZ

Sizes: 6-12 (inc half sizes except 11½)

4006	MODZ White
------	------------



APOLLO

Apollo shoes for both Men and Women.
Made with a full leather upper for enhanced comfort
also has the new improved sole for exceptional grip.

Sizes :	Gents (6 - 12)
---------	----------------

425	Gents Apollo	White Leather
-----	--------------	---------------

Sizes :	Ladies (3 - 8)
---------	----------------

423	Ladies Apollo	White Leather
-----	---------------	---------------



TROLLEY CASES

TAYLOR TROLLEY CASE

Multifunctional item suitable for both bowls transport and general luggage purposes. Practical compartments, plenty of space for accessories. Good sized, sturdy, extendable trolley handle. Black with Grey/Red or Grey/Blue TAYLOR branding.

354BL	Taylor Trolley Case Black/Blue,
354R	Taylor Trolley Case Black/Red

Height 14", Width 17", Depth 10"



MINI TROLLEY CASE

Large enough for all your bowling equipment. Contains a full size pocket to the front area of the bag and has a push button, double leg, telescopic handle.

389BL	Mini Trolley Case	Blue
389PR	Mini Trolley Case	Purple
389PK	Mini Trolley Case	Pink

Height 16", Width 12", Depth 8"



Our exciting bag range is proving very popular !

They not only look good but are practical to. Any size of bowl will fit in either the Mini or Midi Sport Bag with plenty of room for shoes and clothing.

MINI - SPORT

Mini Sport available in

381BL Royal Blue

381R Red

381BLK Black

381PNK Pink

- Detachable shoulder strap
 - Wide Zip opening
 - Strong durable zips
 - Comfortable handles
 - Modern flexible material
 - Will fit any size bowl
- Height 12½", Width 11½", Depth 11½"



MIDI - SPORT

Midi Sport available in

355BL Royal Blue

355R Red

355BLK Black

- Detachable shoulder strap
 - Wide Zip opening
 - Strong durable zips
 - Comfortable handles
 - Modern flexible material
 - Will fit any size bowl
 - Pocket for either shoes or wet gear
- Height 13", Width 17", Depth 12"



4 BOWLS SLING

395R	Red	4 Bowls Sling
395PNK	Pink	4 Bowls Sling
395BL	Blue	4 Bowls Sling
395BLK	Black	4 Bowls Sling



FOUR BOWL CYLINDER

387BL	Four Bowl Cylinder	Blue
387R	Four Bowl Cylinder	Red
Height 5½", Width 17", Depth 5½"		





TWO BOWL CYLINDER

337BL	Two Bowl Cylinder	Blue
337R	Two Bowl Cylinder	Red
Height 5½", Width 10", Depth 5½"		

TWO BOWL SPORTS BAG

338BL	2 Bowl Double Decker	Blue
338R	2 Bowl Double Decker	Red
Height 13", Width 10", Depth 6½"		



TOUCHER SPRAY

477S	Toucher Spray
477	Toucher Spray Display Pack of 20



GRIPDRI CLOTH

GRIPDRI is particularly effective in wet conditions. The fabric attracts water like a magnet and gives the perfect grip for a carefree and confident delivery. Can be used wet or dry.

457BL	Blue GripDri Cloth
457TRQ	Turquoise GripDri Cloth



GRIPIT CLOTH

Tackifying cloth, no mess grip enhancer for the strongest, cleanest control of your bowl. Keep a firm grip on your game!

495	Gripit
-----	--------



RUBBER WEDGES

436R	Multi - Angled Rubber Wedge.
------	------------------------------



TAYLOR GRIP-IT STICK

490	Taylor Grip It Stick - New twist stick for maximum grip.
-----	--



REBOUND COACHING DISCS

6008SP	Rebound Coaching Discs - (Set of 10 spiked)
--------	---



BASEBALL CAP

771 Baseball Cap - White



BOWL AND JACK LIFTER

A bowl and jack lifter, manufactured in chrome coated steel. Comes in three sections for easy storage in your bowling bag and can be screwed together when needed.

430 Bowl and Jack Lifter



CROWN GREEN RUBBER FOOTER MATS

Our coloured footer mats will come embossed with the Taylor logo as illustrated above.

5 1/2" diameter

478C Blue, Red or Yellow



TAYLOR CAP

771C Baseball Cap - Red/White/Black



SUN HAT

Sizes: S/M L/XL

772 Reversible Unisex Sun Hat
White with plain navy reverse.



UNISEX RAIN HAT

Sizes: S/M/L

770 Unisex Rain Hat **NEW FIT**



SUNDRIES

TAYLOR TOURNAMENT MEASURES

Designed with help and advice from the top officials and in conjunction with information gleaned from bowlers at all levels of the game.

Our designers took into account modern technology, accuracy, ease of use, quality and value in their conquest for these specifications.

Our measures are manufactured to exacting standards to incorporate a secure measuring mechanism and are housed within a solid colour injection moulded casing. The cord is a fine, flexible, silver nylon coated, multi-strand, steel cable. Common to each model is a ridged base to ensure a secure, non-slip foundation.

442BL	11ft measure Blue with belt clip & callipers
442BLK	11ft measure Black with belt clip & callipers
442R	11ft measure Red with belt clip & callipers



SCORECARDS

480	Scorecard holder
481	Scorecards (not shown) Pack of 100



COMPETITIONS

482	Tie sheet - 64 draw	Pack of 10
-----	---------------------	------------

UBI LAUNCHER BOWLS AID

431 UBI Launcher Bowls Delivery Aid

Please view
the Ubi Launcher
on our website to
watch a video of
it in action.

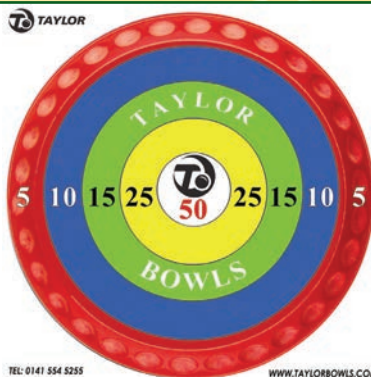


If you suffer from a bad back, bad hips or bad knees then this device may be just the delivery aid you've been looking for. For easy storage you can take the device apart. With adjustable length from 30" up to 48"



JACKS

461	White Jack WB Regulation
461Y	Yellow Jack WB Regulation
461P	Pink Jack - Practice or Coaching only
461B	Blue Jack - Practice or Coaching only
Pink and Blue Jacks have been approved by Bowls Scotland for Official Play	
461H	White Jack Heavy Density
461HY	Yellow Jack Heavy Density



TARGET BOWLS

Ideal way to add fun to club open days

6007 Target Bowls Mat

PRINTED MARKER LABELS

451 Printed Bowl Marker Labels - Vinyl
Due to new printing technologies we can now offer full colour printing at no extra cost - no plates are required.
Please check our website or call for details.



PLAIN BOWLS MARKER LABELS

444	Bowls Marker Labels - Vinyl Pack of 4
450	Bowls Marker Labels - Vinyl Rolls of 100



TAYLOR MATS

472	Taylor Standard Rubber Mat WB Regulation (Black)
472BL	Taylor Standard Rubber Mat WB Regulation (Blue)
47R	Taylor Standard Rubber Mat WB Regulation (Red)



472C

FOR YOUR CLUB

HEAD OFFICE - UNITED KINGDOM

Taylor Bowls Limited
217 Bernard Street, Glasgow, Scotland G40 3NB
Tel: 0141 554 5255
Fax: 0141 551 0594
Email: info@taylorbowls.com

AUSTRALIA - OFFICE

Taylor Bowls (Australia) Pty Ltd
5/95 Eumundi Road
Noosaville, QLD 4566
P.O. Box 688
Tel: 00 617 5449 9011
Fax: 00 617 5442 4677
Email: enquiries@taylorbowls.com

BELGIUM

Loix Bowls Materialen
Steenberg 25, 3500 Hasselt, Belgium
Tel: 00 32 11311722 Fax: 00 32 11311722

CANADA

MVP Sports
2703 Division Street North, R.R.4 Cobourg,
Ontario, Canada K9A 4J7
Tel: 00 1 800 265 1687
Email: mvpssport@eagle.ca

DENMARK

Karen Damborg
International Committee
DGI Vestjylland
Kongehøjen 31, Hornshøj
DK 7500 Holstebro, Denmark
Tel: 00 45 26359069
Email: karen.damborg@mnb.net

GERMANY

Carmen Meister
CIM Projects, Hauptstrabe 4
D-04626 Drogen, GERMANY
Tel: 00 49 34491 56502
Email: cimprojects@yahoo.de

HONG KONG

Harry Thornton / Joanna Lee
c/o Kowloon Bowling Club
123 Austin Rd, Tsim Sha Shu,
Kowloon, Hong Kong
Tel: 00 852 9526 3357
Email: thornton.hj@gmail.com

ISRAEL

Mel Treiwis Agencies
17 Poalei Zion, Herzlia 4624228, Israel
Tel: 00 972-9-7732215
Mobile: 0772-52-3261522
Email: mt9532@gmail.com

JAPAN

Makoto Yamada
Chair, Board of Directors
Bowls Japan
7-3-1-806 Maikodai, Tarumi-ku, Kobe, Japan
Tel/Fax: 00 81 787836436
Email: makotoya@mx4.canvas.ne.jp

MALAYSIA

Email: chooie2003@gmail.com

NETHERLANDS

Windle & Braam
Schipholweg 1095, 2141 Bg Vijfhuizen, Nederland
Tel: 00 3123 5581739 Fax: 00 3123 5583657
Email: windle-braam@planet.nl

NEW ZEALAND

Hunter Bowls NZ
c/- Ellerslie Bowls Club
20 Kalmia Street
Ellerslie 1542
New Zealand
Tel: +61 2 9634 5888
Email: nilesh@hunterbowls.co.nz

SOUTH AFRICA

Hilton Cherry
Pro Bowls cc, c/o The Woods,
Brookes Hill Drive, Humewood,
Port Elizabeth, South Africa, 6013
Tel: 0 82 4670881 (Hilton Cherry)
Email: info@probowls.co.za

SWEDEN

Bowls Sport & Fritid AB
Tanumsvägen 20 A
SE-457 72 Grebbestad
Sweden
Tel: +46705337546
Email: bowlsinsweden@hotmail.com

USA

Daniel Jittu
USA National Distributor
PO Box 789
Sarasota FL 34230
United States
Tel: (407) 529-9886
Email: usataylorbowls@gmail.com

www.taylorbowls.com



Scan here to visit
our website.